

AGU[®] ADVANCED
GROWING
UP



Fay

SOOTHER STERILIZER

AGU PS1 UV



en USER MANUAL

agu-baby.com

CONTENTS

1	Introduction	3
2	List of symbols	4
3	Scope of application	5
4	Complete set	5
5	Basic specifications	6
6	Device description	7
7	Guidelines for safe operation	8
8	Before you start	10
9	Operation principle and procedure.....	11
10	Cleaning and care	14
11	Troubleshooting	15
12	Rules for transportation, operation and storage.....	16
13	Disposal.....	17
14	Certification.....	17
15	Manufacturer's warranty	18

1

INTRODUCTION

Dear friends, thank you for choosing our products!

Soother sterilizer **AGU PS1 UV** is a modern, simple and easy to use highly efficient device that allows you to quickly disinfect baby soothers, bottle nipples, teethers and many other accessories.

Soother sterilizer **AGU PS1 UV** features:

1. The device uses the ultraviolet germicidal irradiation (UVGI) technology to produce ultraviolet light in the UV-C range (200 – 280 nm). The UV-C range is the most effective for killing microbes, as its short-wavelength radiation can penetrate the walls into the cells of microorganisms, causing molecular instability that leads to disruption of the DNA sequence, making the cells unable to grow and reproduce. Being unable to reproduce, the cell loses its viability and dies quickly. Viruses are especially sensitive to UV-C radiation because they lack cell walls or cell membranes.
2. Effectively kills up to 99.9% of germs, bacteria, mold and viruses, giving your child extra protection and helping him/her grow up healthy.
3. The device does not generate ozone and does not produce any hazardous deposits or harmful chemicals.
4. Safe to use. If the cover is accidentally opened during operation, the built-in safety switch will automatically disable the device.
5. The device has a small size and is powered by a built-in battery, which allows you to protect the health of your child both at home and during walks or trips. With its compact and portable design, the sterilizer can be easily fitted in any travel bag or backpack, or fixed to your handbag, diaper bag or stroller with the handy strap provided.
6. You can disinfect soothers, bottle nipples and teethers anytime and anywhere.



Please read this user manual carefully before using the soother sterilizer. Keep it for future reference.

2

LIST OF SYMBOLS

Symbol Meaning



The product complies with the essential requirements of:

- Electromagnetic Compatibility Directive 2014/30/EU;
- Low Voltage Directive 2014/35/EU;
- Directive 2011/65/EU on the restriction of the use of certain hazardous substances in electrical and electronic equipment.



WEEE (Waste Electrical and Electronic Equipment Directive). The symbol on the product or its package means that this product does not fall under the category of domestic waste. In order to prevent possible damage to the environment and human health, such waste should be segregated from other types of waste and disposed of in accordance with accepted standards.



This symbol indicates that the battery should be collected and disposed of separately in accordance with Directive 2006/66/EU.

The type of rechargeable battery used in the device is specified in the «Basic specifications» section.



The product complies with the essential requirements of:

- TR CU 020/2011 «Electromagnetic compatibility of technical means»;
- TR CU 004/2011 «On safety of low-voltage equipment»;
- TR EAEU 037/2016 «On the restriction of the use of hazardous substances in electrotechnical and radio-electronic products».



Warning/Attention.



Read the user manual before using the device.



Manufacturer.

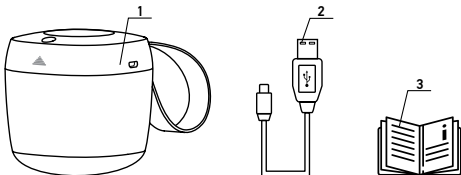


Date of manufacture.

3 SCOPE OF APPLICATION

Soother sterilizer **AGU PS1 UV** is designed to disinfect baby soothers, bottle nipples, teethers and other accessories. If you use the sterilizing element separately from the sterilization container, you can disinfect many other items such as cell phones, toys, remote controls, eyeglasses and other household items.

4 COMPLETE SET



1. Sterilizer – 1 pc.
2. USB cable* (USB-A to micro-USB) – 1 pc. (*optional)
3. User manual – 1 pc.
4. Warranty card – 1 pc.

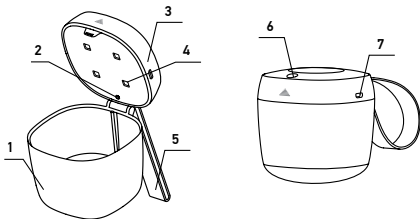
5

BASIC SPECIFICATIONS

Type	Ultraviolet soother sterilizer
Model	AGU PS1 UV
Power supply	ICR 14500, 700 mA/h, DC 3.7 V battery
Battery life, min	About 150
Charging port	micro-USB
Type of sterilization	Ultraviolet, in the UV-C range (200 – 280 nm)
LED type	2 x UVA LED + 2 x UVC LED
Sterilization time, min.	1 or 3
Sterilization container capacity, liters	0.2
Dimensions, mm	80.4 x 89.0 x 81.8
Weight, g	About 121.0
Strap	Silicone, approx. 200 mm long
Operating temperature, °C	5 - 40
Operating humidity, % RH	15 - 85
UV LEDs lifetime, hours	10000

6 DEVICE DESCRIPTION

6.1. The main elements of the device



1. Sterilization container – 1 pc.
2. Micro switch – 1 pc.
3. Sterilizing element (top cover) – 1 pc.
4. Ultraviolet LEDs – 4 pcs.
5. Silicone strap – 1 pc.
6. ON/OFF button & Light indicator – 1 pc.
7. Micro-USB port – 1 pc.

6.2. Operating modes

Soother sterilizer **AGU PS1 UV** can be used in two operating modes:

- the sterilizing element (top cover) is used in combination with the sterilization container;
- the sterilizing element (top cover) is used separately from the sterilization container, which allows you to sterilize any household items such as cell phones, toys, remote controls, eyeglasses and so on.

6.3. Protective elements

The device uses two protective elements:

- **Micro switch.** Ensures UV protection during operation when the sterilizing element is used in combination with the sterilization container. Disables the device when the top cover is opened.
- **Ball switch.** Integrated into the sterilizing element. Ensures UV protection during operation when the sterilizing element is used separately from the sterilization container. Disables the device when the sterilizing element is turned by an angle of more than $90^{\circ} \pm 5^{\circ}$.

6.4. Light indication

Device status	Light indicator
Standby / Off	Off
Sterilization	On
Low battery	Blinks 3 times
Battery charging	Blinking continuously
Battery fully charged	On

7

GUIDELINES FOR SAFE OPERATION

Before using the device, please read the user manual carefully and keep it for future reference.



ATTENTION!

RADIATION EMITTED BY ULTRAVIOLET LEDS MAY CAUSE BURNS TO THE SKIN AND INJURY TO THE EYES.

DO NOT LOOK AT THE ULTRAVIOLET LIGHT WHILE THE DEVICE IS OPERATED.

1. Remember to close the top cover of the sterilizer before use.
2. Direct exposure to the light produced by the UV LEDs of the device may damage the eyes. Always switch off the device before opening the top cover.
3. Do not switch on the device if the sterilizing element is turned by an angle of 90° or more, or if there is a risk that your eyes or the eyes of people and animals around you may be exposed to direct radiation from UV LEDs.
4. Do not use this device on animals or for food.
5. This device is intended for domestic use only. Do not use the device for purposes other than intended. Use the device only for the purposes specified in this user manual. Using the device for purposes other than those specified in this user manual is considered as a violation of the operation rules.
6. Do not use the device if there is visible damage to its housing.
7. This device is not intended for use by persons (including children) with reduced physical or mental capabilities, or lack of experience and knowledge, unless they have been instructed on the safe use of the device.
8. Do not leave the device unattended during operation or while charging the battery.
9. Do not use the device in extremely damp rooms such as a bathroom, sauna, etc.
10. Clean the device regularly. Do not immerse it in water. Do not wash the device under running water to avoid damaging its electronic components. For more information, please refer to «Cleaning and care» section.
11. Do not use abrasive detergents such as emulsions, cream cleaners, polishes, etc. to clean the device housing.
12. Do not decapsulate the sterilizing element of the device.
13. If any malfunction is detected, stop using the sterilizer and contact a specialized service center. Under no circumstances should you attempt to repair the device yourself. All repairs must be carried out by an authorized service center. Unprofessional repairs may cause damage to the device or injuries.
14. The manufacturer shall not be liable for any damage or loss caused by non-compliance with the safety instructions or by improper and unintended use.

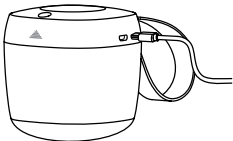
15. It is recommended that you charge the device every month to extend the battery life if you do not use it often.
16. Please do not use a low-quality USB charging cable.
17. Keep the device out of the reach of children. Do not allow children to use the device as a toy. The sterilizer is not a toy and is not intended for play!

8 BEFORE YOU START

Take the device and its accessories out of the box, remove all packing materials, promotional stickers and labels.

Battery charging.

Before using the sterilizer, charge its battery with a micro-USB cable and a 5V/1A max adapter (not included).



While the battery is being charged, the light indicator is blinking continuously. When the battery is fully charged (the light indicator is constantly on), remove the micro-USB cable from the device. The sterilizer is ready to use.

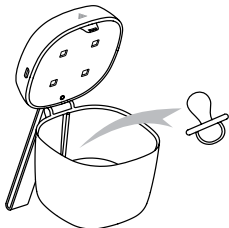
9.1. Combined use of the sterilizing element and the sterilization container. 1-minute/3-minute sterilization mode.

9.1.1. Rinse the soother or nipple before sterilization.

9.1.2. Wipe it clean to remove debris and remaining water.

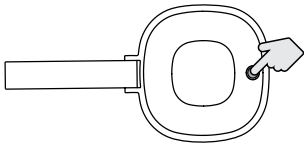
9.1.3. Place the soother or nipple in the sterilization container and close the cover. For more effective sterilization, the side of the soother or nipple to be sterilized should be facing upward.

Do not place more than one soother or nipple in the sterilization container at a time.



9.1.4. Close the top cover of the device.

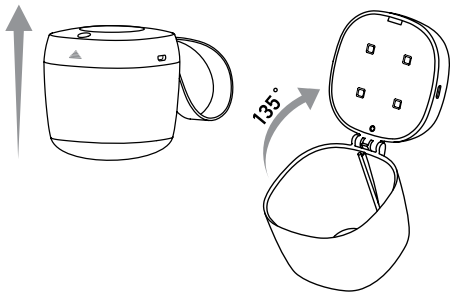
9.1.5. Press the ON/OFF button twice to activate the 1-minute sterilization mode or press and hold the ON/OFF button for 3 seconds to activate the 3-minute sterilization mode.



- 9.1.6. The indicator on the button will light up steadily to indicate that the sterilization process has begun.
- 9.1.7. When the sterilization process is complete, the device will switch off automatically. The indicator light will go out.
- 9.1.8. You can switch off the device yourself by pressing the ON/OFF button. The sterilization process will also stop and the device will switch off automatically for your safety if the top cover is opened during sterilization.

**9.2. Use of the sterilizing element separately from the sterilization container.
1-minute/3-minute manual sterilization mode.**

- 9.2.1. Open the top cover of the device so that the angle between the cover and the sterilization container is 135°.



9.2.2. Detach the sterilizing element (top cover) from the sterilization container by pulling it in the direction of the arrow.

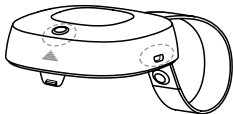
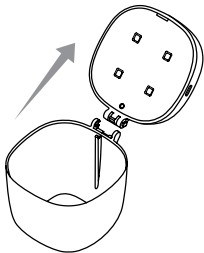
9.2.3. Now you can use the sterilizing element separately.

9.2.4. While holding the sterilizing element over the items to be sterilized in the position shown in the figure below, press the ON/OFF button twice to activate the 1-minute sterilization mode or press and hold the ON/OFF button for 3 seconds to activate the 3-minute sterilization mode.

9.2.5. The indicator on the button will light up steadily to indicate that the sterilization process has begun.

9.2.6. When the sterilization process is complete, the device will switch off automatically. The indicator light will go out.

9.2.7. You can switch off the device yourself by pressing the ON/OFF button. The sterilization process will stop and the device will switch off automatically for your safety if the sterilizing element is turned upside down during sterilization.



⚠ Pay attention to a number of important recommendations for using the sterilizer in manual sterilization mode:

- Try to keep the sterilizing element level during the sterilization process.
- Keep the sterilizing element no more than 2-3 cm away from the items to be sterilized.
- Do not move the sterilizing element rapidly during sterilization.
- Do not switch on the device if the sterilizing element is turned by an angle of 90° or more, or if there is a risk that your eyes or the eyes of people and animals around you may be exposed to direct radiation from UV LEDs.

10 CLEANING AND CARE

⚠ WARNING!

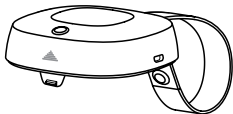
Do not clean the device while the battery is being charged and the device is plugged in.

Regular care and cleaning are prerequisites for smooth and long-term operation of the device.

The device is not waterproof. Do not immerse it in water.

10.1. Cleaning the body of the sterilizing element

To clean the body of the sterilizing element, wipe it with a soft, slightly damp cloth or tissue. Remove residual moisture to prevent electrical fault of the device.



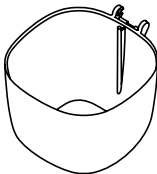
Do not use abrasive detergents such as emulsions, cream cleaners, polishes, etc.

Do not expose the UV LEDs and USB connector to moisture.

10.2. Cleaning the body of the sterilization container

To keep the device hygienic, the sterilization container can be washed with warm soapy water, having previously disconnected the sterilizing element from it.

Remove all water droplets and completely dry the sterilization container before using the device to prevent electrical damage by moisture.



11 TROUBLESHOOTING

Malfunction	Possible cause	Solution
Sterilizer does not switch on	Dead battery	Charge the battery
	ON/OFF button is not working	Please contact a specialized service center to diagnose and rectify the problem
When the sterilizer is switched on, the light indicator blinks 3 times and the device switches off automatically	Low battery	Charge the battery

UV LEDs do not go out when the sterilization container cover is opened	Cover-open detection micro switch is contaminated	Check the cover-open detection micro switch for contamination. Wipe it clean with a piece of cloth
	Cover-open detection micro switch is defective	Please contact a specialized service center to diagnose and rectify the problem
UV LEDs do not go out when the sterilizing element is turned over	The device has been switched on with the sterilizing element in the wrong position or the angle of inclination is insufficient	Make sure that you use the device properly, following the instructions in paragraph 9.2.
	Ball switch is defective	Please contact a specialized service center to diagnose and rectify the problem

12 STORAGE, TRANSPORTATION AND OPERATION RULES

The device should be transported at temperatures ranging from -10°C to +40°C with relative humidity up to 85%.

The device should be operated at temperatures ranging from +5°C to +40°C with relative humidity up to 85%.

The device should be stored at temperatures ranging from +5°C to +40°C with relative humidity up to 85%.

Do not expose the device to thermal shock.

WARNING!

After transportation or storage at low temperatures, the device should be kept at room temperature for at least 2 hours before switching on.

13 DISPOSAL



The symbol on the product or its package means that this product does not fall under the category of domestic waste.

- Proper disposal of the device will prevent adverse environmental and human health effects.
- In order to protect the environment, the device must not be disposed of together with domestic (household) waste. Disposal must be carried out in accordance with local regulations.
- The device must be disposed of in accordance with the EU Directive 2012/19/EU WEEE (Waste Electrical and Electronic Equipment).



This symbol indicates that the battery should be collected and disposed of separately in accordance with Directive 2006/66/EU.

If you have any questions, please contact the local public utility responsible for waste disposal.

14 CERTIFICATION

Soother sterilizer **AGU PS1 UV** complies with:

- Electromagnetic Compatibility Directive 2014/30/EU;
- Low Voltage Directive 2014/35/EU;
- Directive 2011/65/EU on the restriction of the use of certain hazardous substances in electrical and electronic equipment;
- TR CU 020/2011 «Electromagnetic compatibility of technical means»;
- TR CU 004/2011 «On safety of low-voltage equipment»;
- TR EAEU 037/2016 «On the restriction of the use of hazardous substances in electrotechnical and radio-electronic products».

15 MANUFACTURER'S WARRANTY

Warranty information is specified in the warranty card. The warranty period starts from the date of sale, providing that all operation conditions specified in this user manual are strictly observed.

The warranty is valid only on presentation of the sales receipt and the warranty card completed by the authorized dealer.

The warranty does not cover consumable parts, components and accessories such as packaging, etc.

Free warranty service is not provided in case of:

- use of the device in violation of the operating instructions;
- damage caused by intentional or erroneous actions of the consumer due to improper or negligent handling;
- evidence of mechanical impact, dents, cracks, chips, etc. on the device housing, evidence of tampering, dismantling, repairs outside the authorized service center, ingress of moisture, exposure to aggressive agents, or any other unauthorized alterations of the device, and in other cases of violation of storage, cleaning, transportation and operation rules specified in the user manual; ingress of oils, dust, insects, liquids and other foreign objects inside the device.

Follow the instructions precisely to ensure reliable and long-term operation of the device.

In case of abnormal operation of the device, please contact a specialized service center or your retailer.

The manufacturer reserves the right to make alterations in the design of the device.

WARNING!

Do not attempt to repair the device yourself - this will void the warranty. The device alterations without the manufacturer's permission will void the warranty.

For repair and maintenance, please contact a specialized service center (for more information, please visit www.agu-baby.com).

Date of manufacture and importer information are specified on the individual package.



Manufacturer:

Montex Swiss AG, Tramstrasse 16, CH-9442, Berneck,
Switzerland.



agu-baby.com

AGU[®] ADVANCED
GROWING
UP



AGU[®] is the registered trademark by Montex Swiss AG,
Tramstrasse 16, CH-9442, Berneck, Switzerland