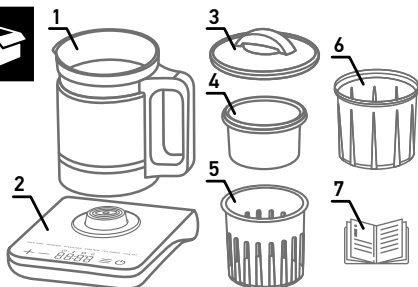
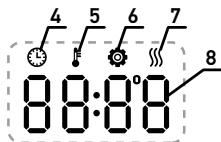
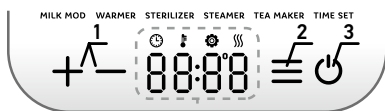


# 1 PARTS DESCRIPTION



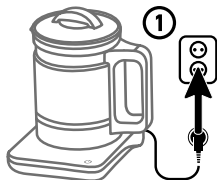
- 1 Glass jar
- 2 Bottom base (stand)
- 3 Jar cover
- 4 Container for steaming
- 5 Container for heating and sterilization
- 6 High jar cover
- 7 Instruction manual

## Touch control panel and display



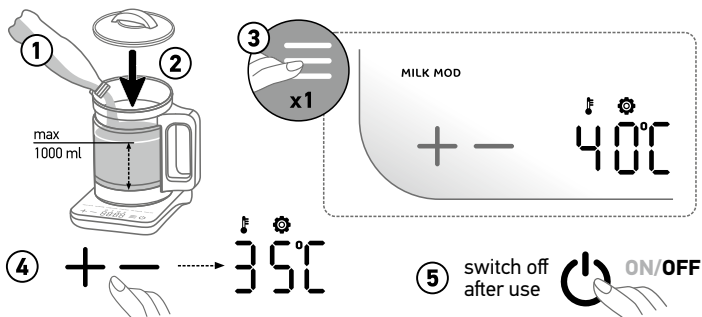
- 1 Time/temperature setting button
- 2 Program selection button (depends on mode)
- 3 ON/OFF button
- 4 Timer indicator
- 5 Temperature indicator
- 6 Program setting indicator
- 7 Operation indicator
- 8 Time and temperature display

# 2 TURNING ON

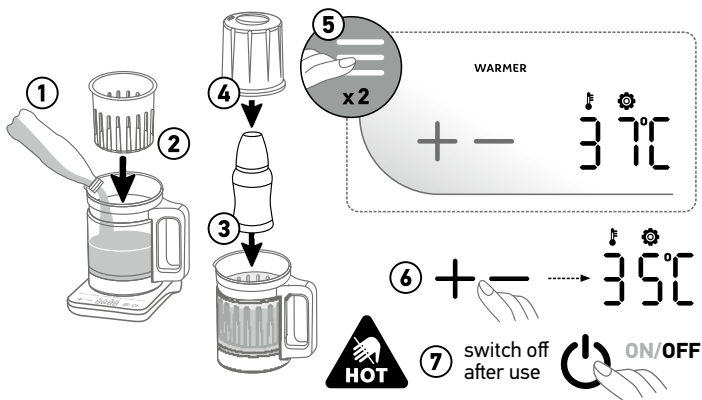


## 2.1 MILK MODULATOR

boiling the water, then maintaining the set temperature

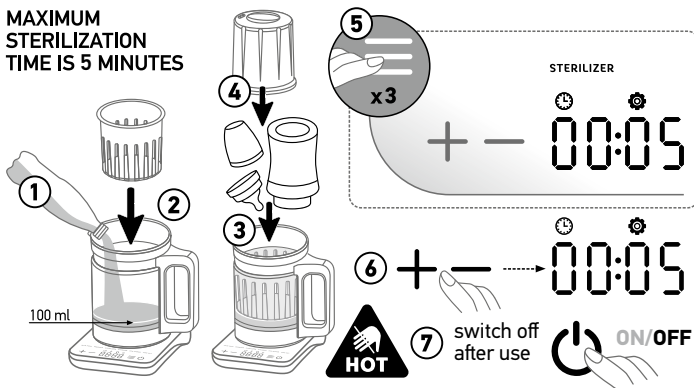


## 2.2 WARMER milk reheating

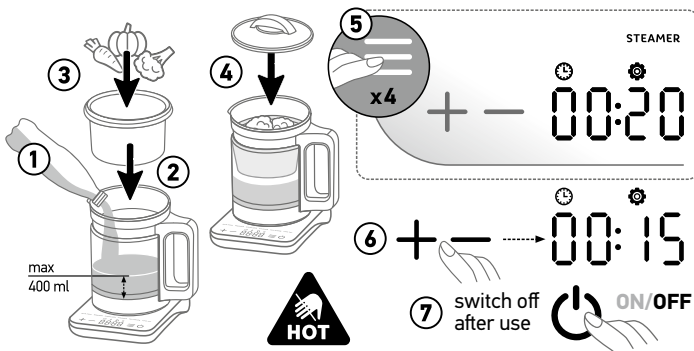


## 2.3 STERILIZER steam sterilization

MAXIMUM  
STERILIZATION  
TIME IS 5 MINUTES

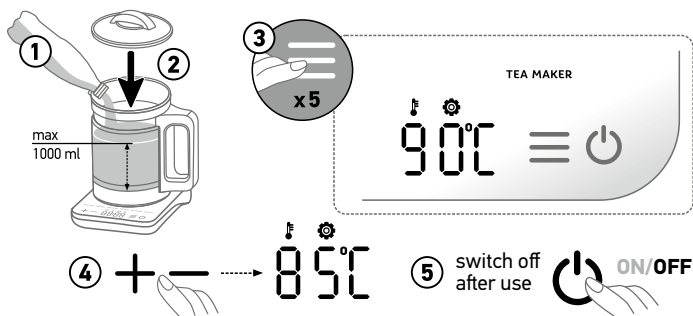


## 2.4 STEAMER steam cooking



## 2.5 TEA MAKER

boiling the water,  
then maintaining the set temperature



## 2.6 TIME SET

delayed appliance start for MILK MODULATOR / WARMER only

